

NetBeans Java EE 6 - UI Review

Jan Rojcek, xDesign

28 August 2009

Misplaced Java EE category in New File wizard

Finding

JavaEE category should not be the very first category in the Web Application file wizard.

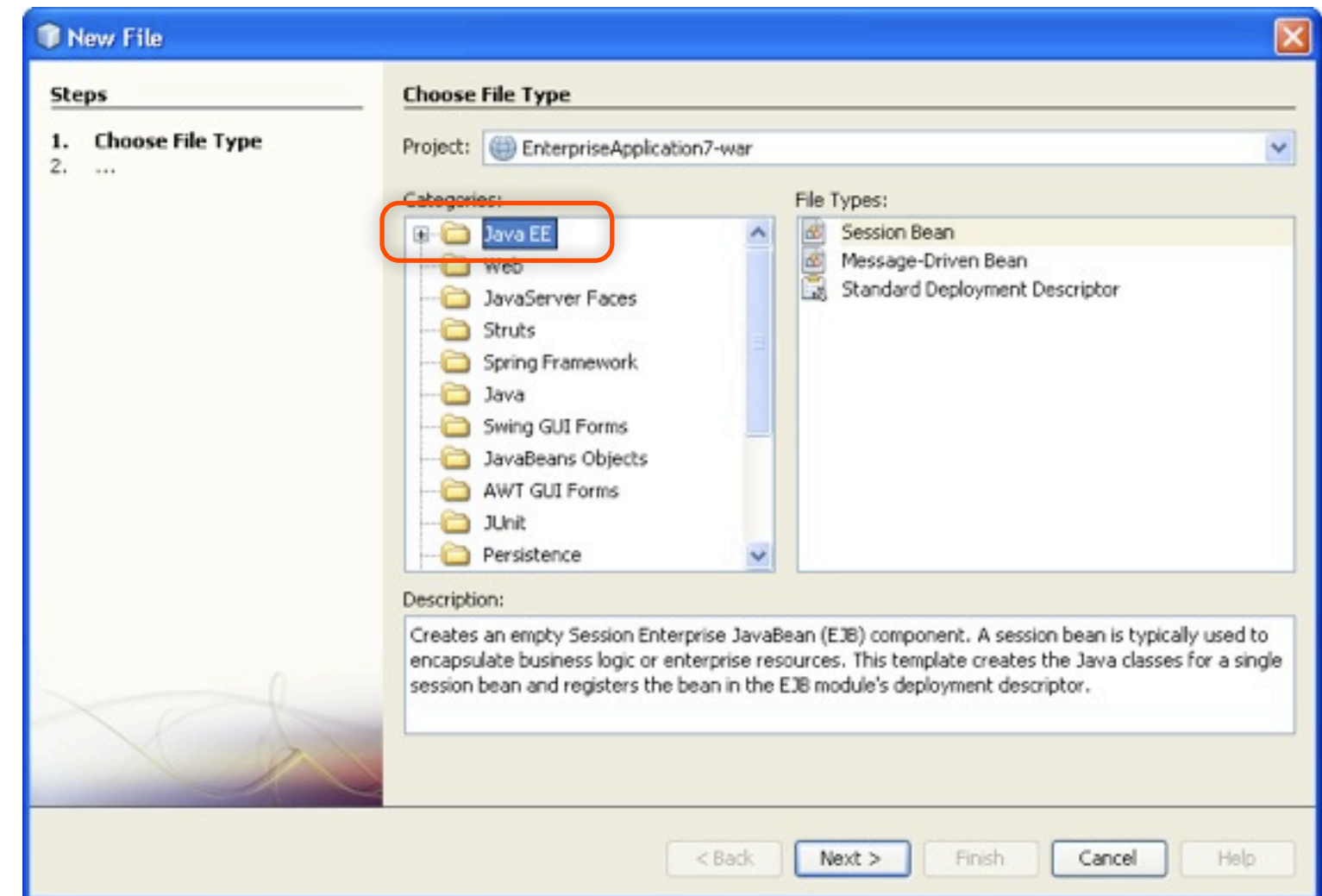
The tree expanding handler next to the Java EE category should not be visible if it does not contain subfolders.

Recommendation

Rearrange the categories:

Spring Framework
JavaEE
Java

Remove the expanding handler.



Wizard unnamed and too wide

Finding

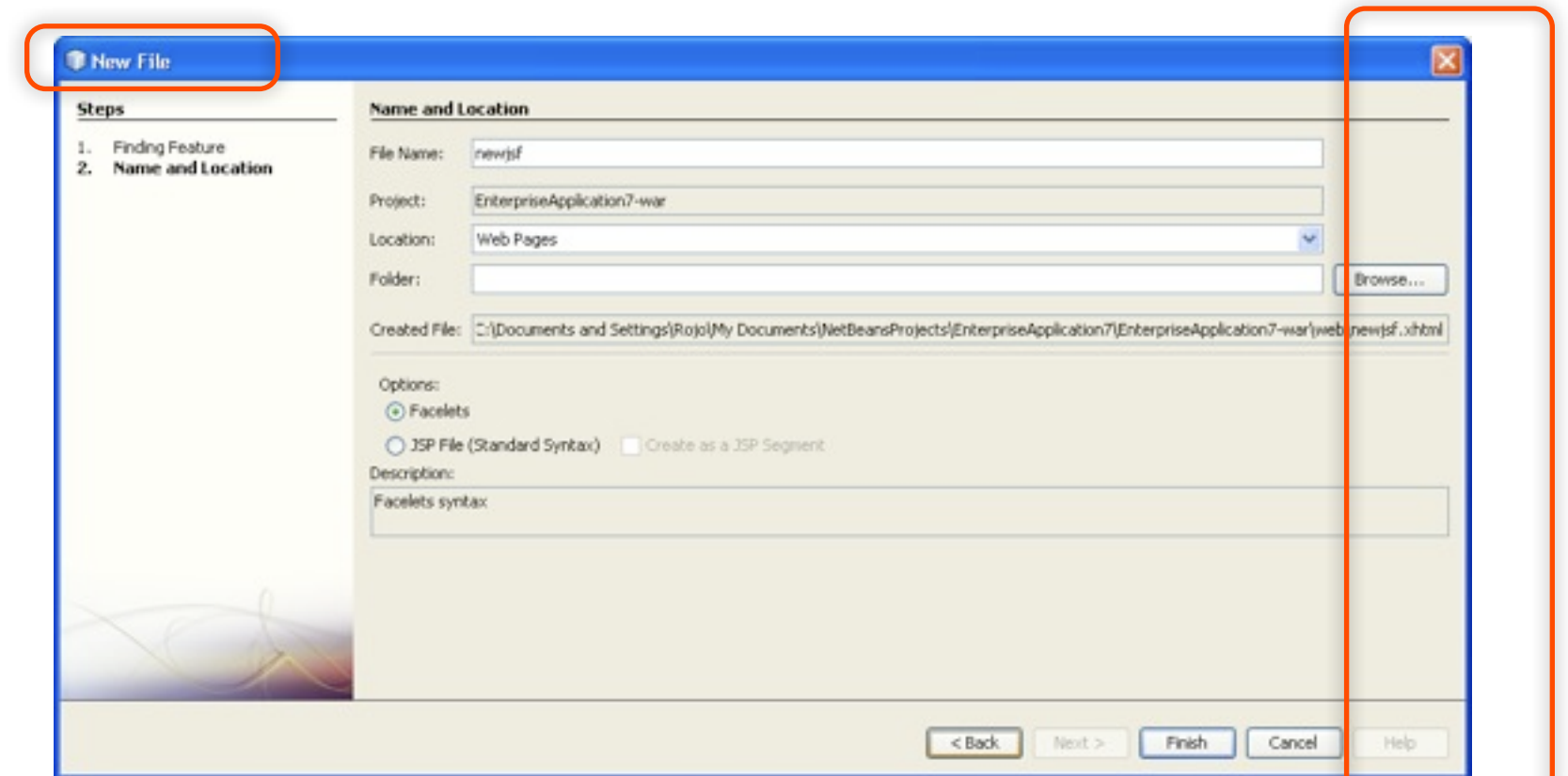
The title of the wizard does not indicate what kind of object is created.

The wizard panel is unnecessary too wide to fit small screen resolutions. The part marked with red rectangle is out of screen on 1024 screen width.

Recommendation

Name the wizard on this step “New JSF Page”.

Make the wizard panel narrower so that the size of wizard does not increase when moving from the first step to this one.



Misplaced JavaServer Faces menu

Finding

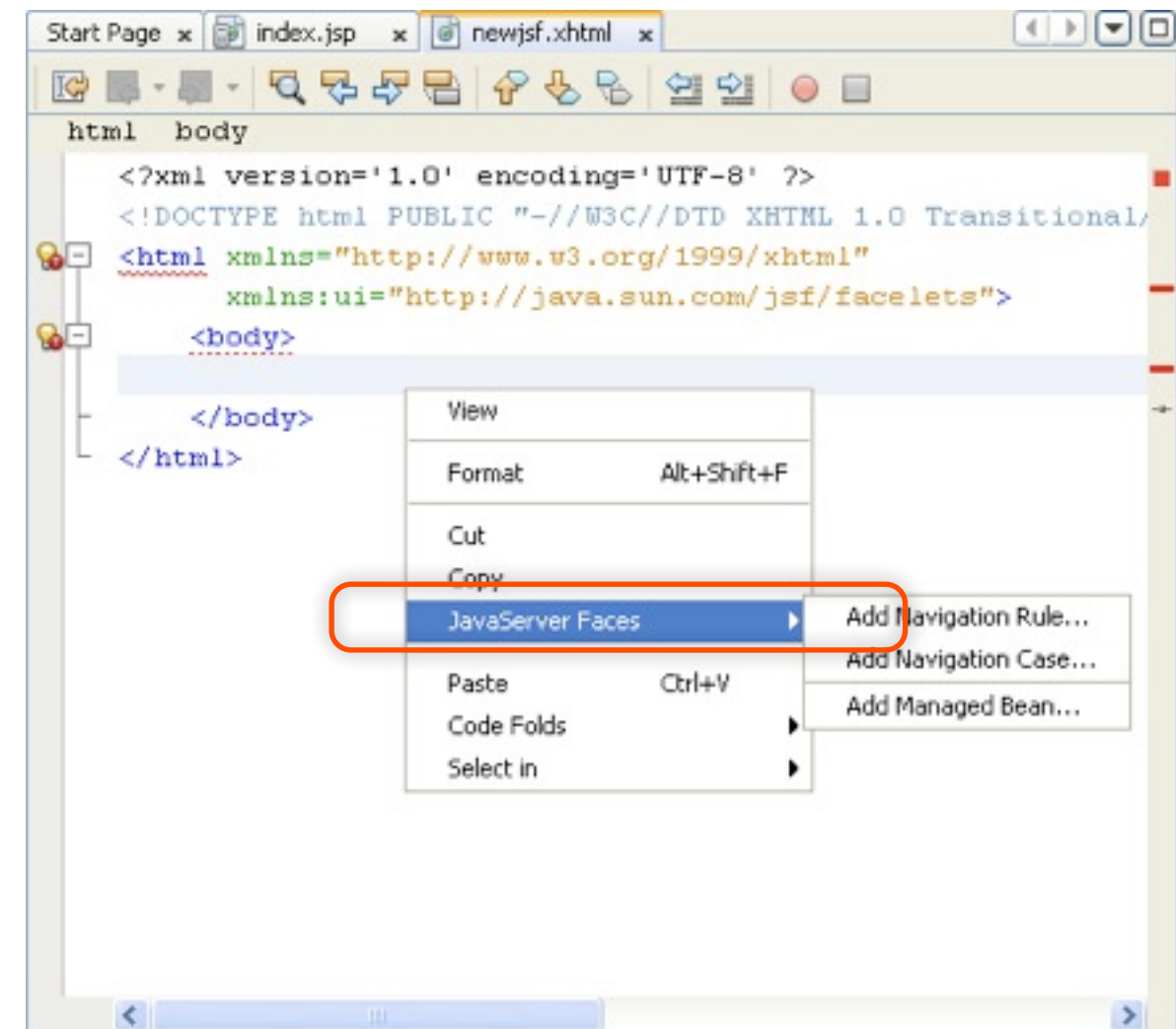
The JavaServer Faces menu is misplaced between typical editing items like Copy and Paste.

Recommendation

Rename the JavaServer Faces menu to “Insert” and rearrange the items like this:

- View
-
- Insert
- Format
-
- Cut
- Copy
- Paste
-
- Code Folds
- Select in

The items in the menu should not start with “Add”, just “Navigation Rule...” should be enough. See [permanent UI spec](#) for uses of Insert menu.



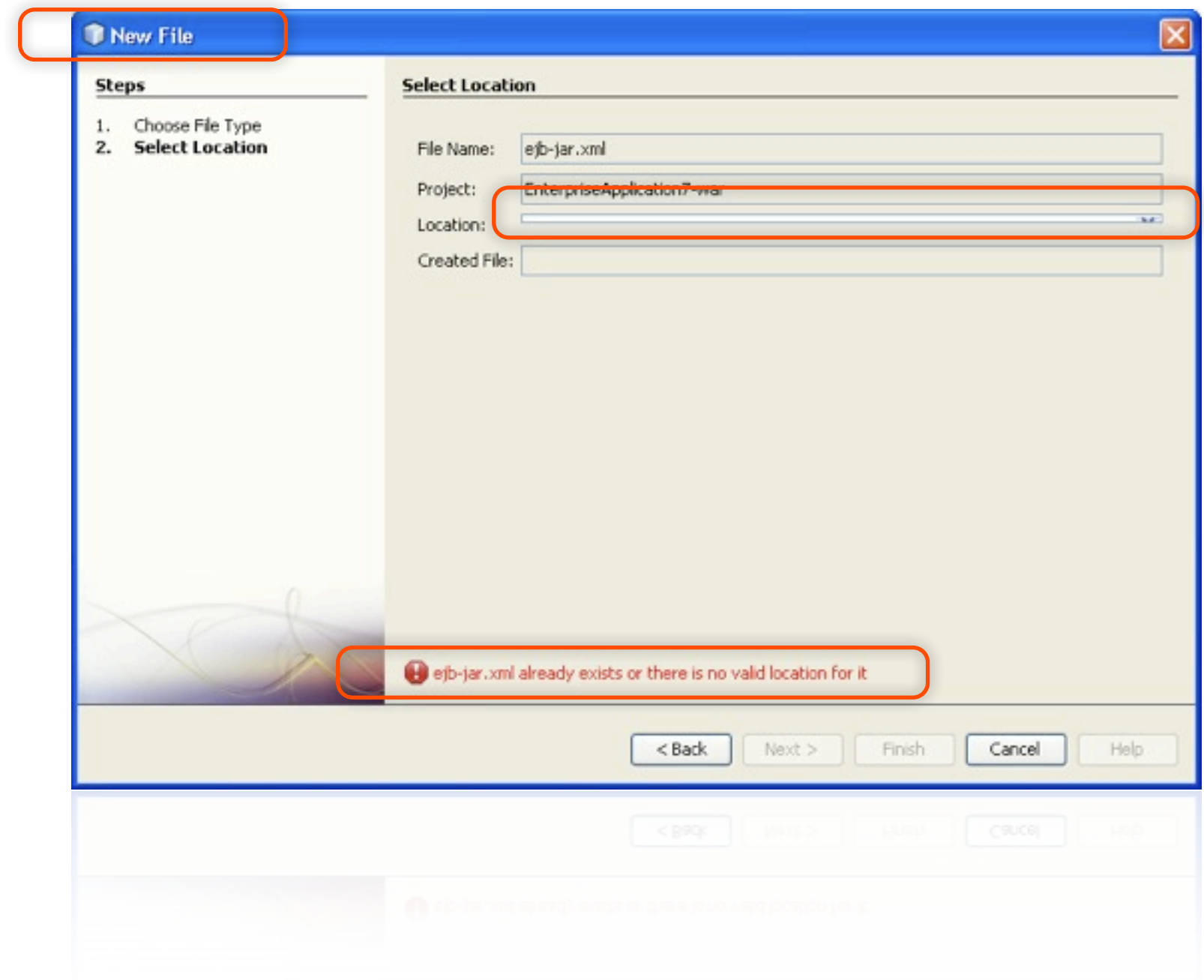
Various issues of ejb-jar.xml wizard

Finding

- The wizard is unnamed. It is not clear what kind of object it creates.
- The location field is corrupted.
- The error message gives no clues how to proceed.

Recommendation

- Name the wizard as New Standard Deployment Descriptor.
- Fix the height of the Location field.
- If only a single descriptor is permitted per project, than the fact the one already exists is not an error. Instead of the error message, replace the whole content of the panel by a message explaining the problem.



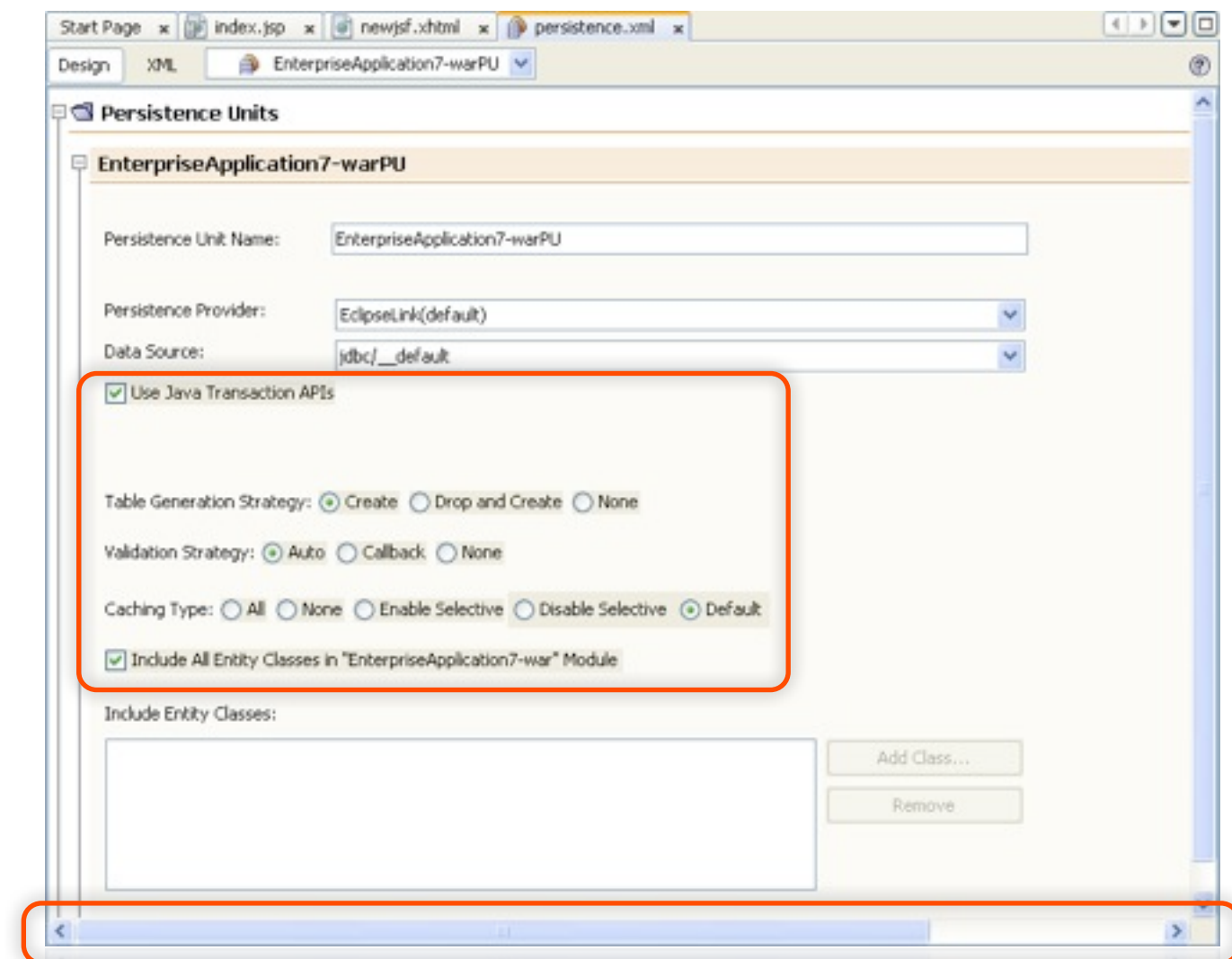
Wrong layout and colors in Persistence Unit editor

Finding

- The radio buttons are not vertically aligned with text fields.
- The background color of check boxes and radio buttons is different from the panel color.
- The horizontal scrollbar is unnecessary.

Recommendation

- Decrease the gap between Use Java Transaction APIs and radio buttons.
- Align radio buttons on the same vertical base line as text fields.
- Check the [draft guidelines](#) for guidance.
- Set correct background color for components. Maybe `setOpaque(false)`?
- Remove the horizontal scroll bar.



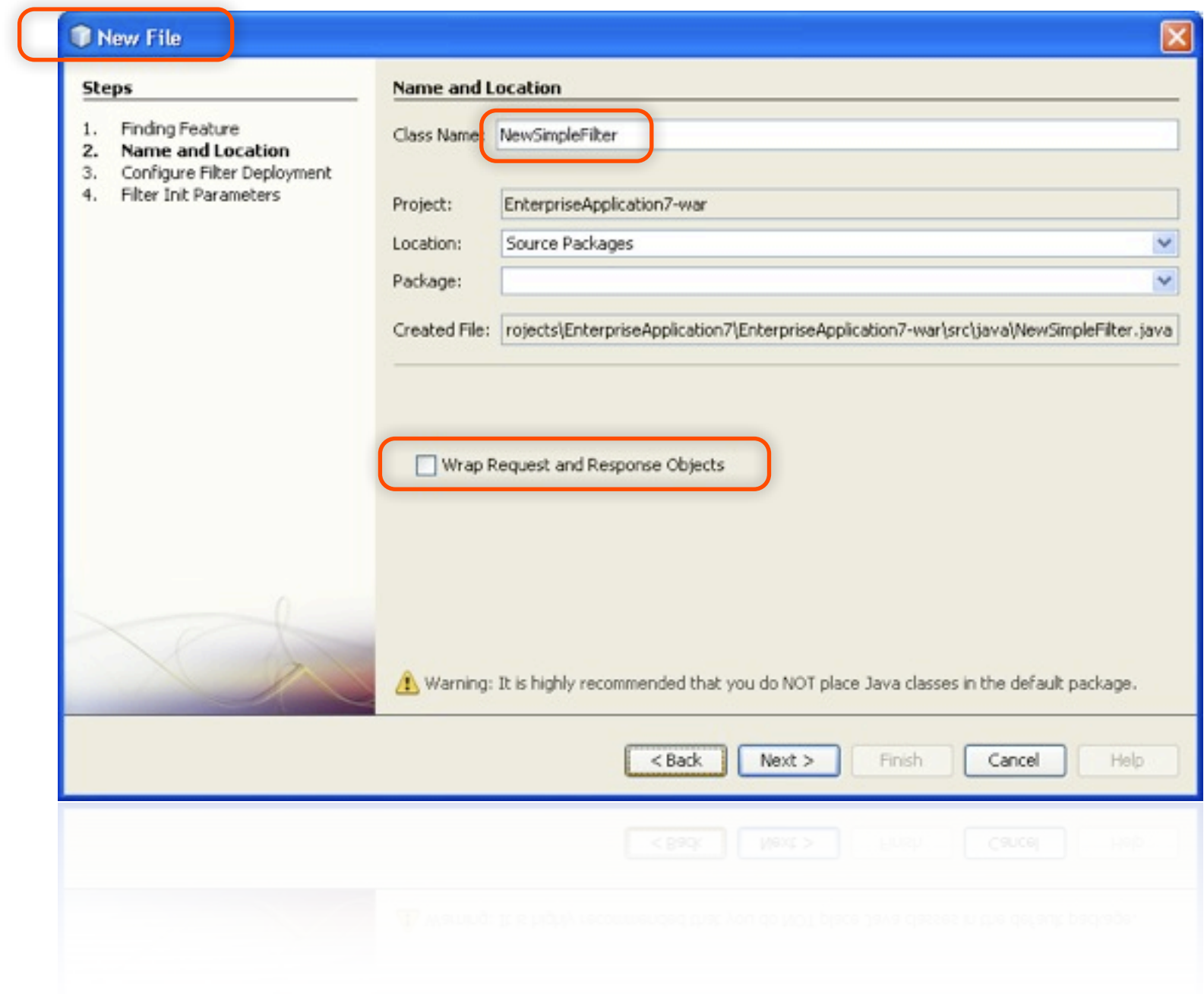
Various issues with the Filter wizard

Finding

- Wizard is unnamed.
- The default class name is inconsistent with other wizards as it contains word simple, which is not part of the template name.
- The check box is not aligned properly aligned.

Recommendation

- Name the wizard as New Filter.
- Use “NewFilter” as the default class name.
- Move check box to the top left corner of its panel.



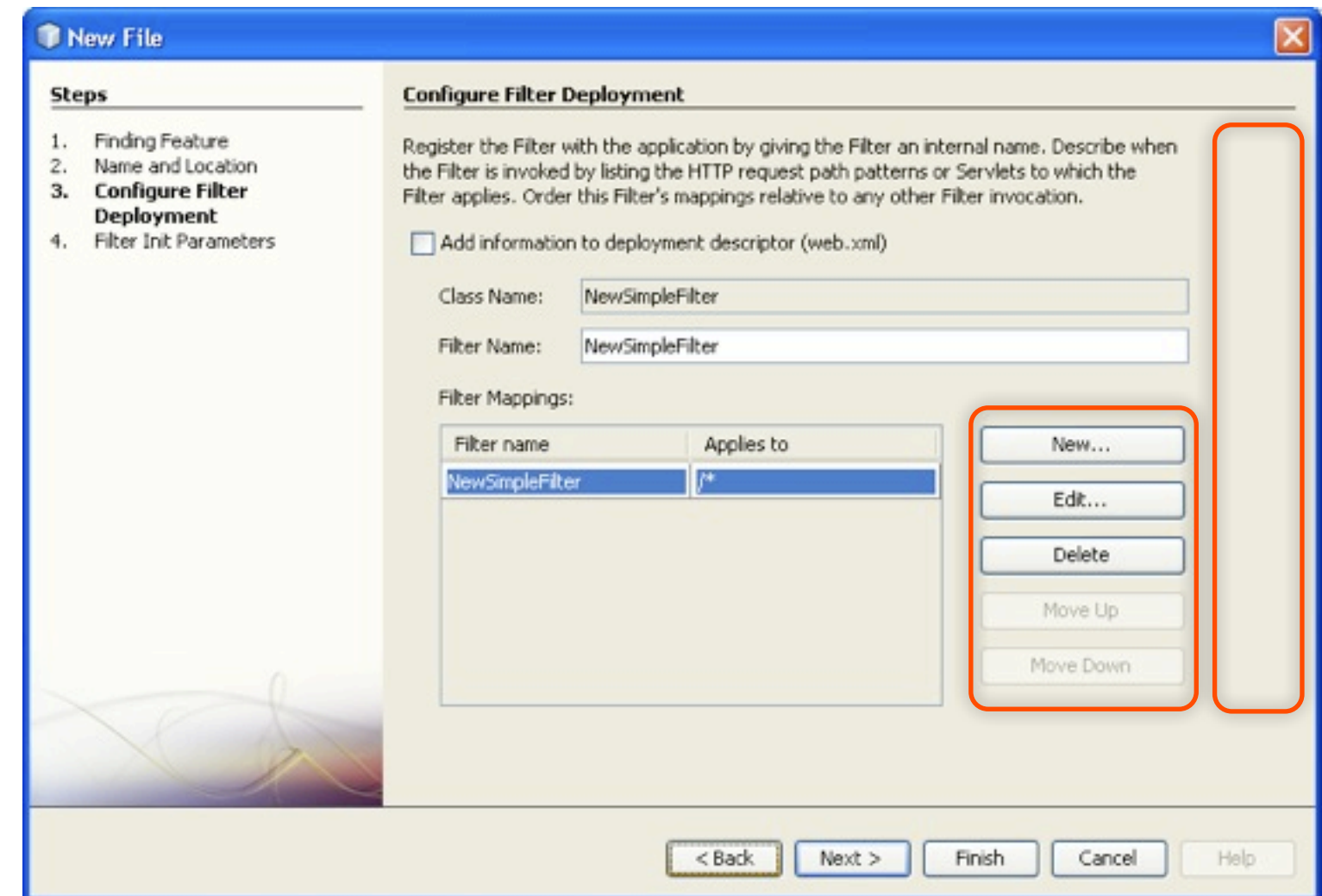
Empty gap at the right side of the panel

Finding

- There is an empty gap at the right side of the Filter panel.
- Also the buttons seem wider than they need to be.

Recommendation

- Remove the gap. Make the stretchable components inside the panel wider.
- Decrease the width of buttons if possible.



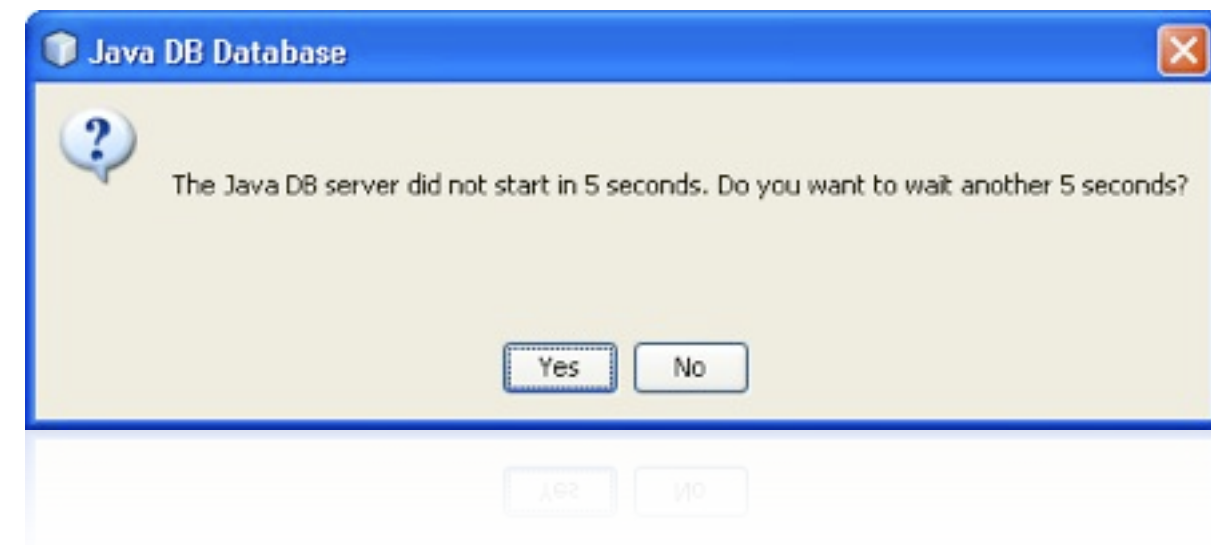
Very weird dialog when starting up the database

Finding

The displayed dialog kept popping up every five seconds after pressing the Yes button. The question is difficult to answer for users as they would not know if waiting would help it or not. The IDE should have more information than the user whether the DB startup is just slow, or something went wrong.

Recommendation

Do automated check whether the database server successfully started up or not. If it does not start up, inform the user about it. If it cannot be done, give users instructions inside the dialog, what they can do to figure out whether waiting some more would work or not.



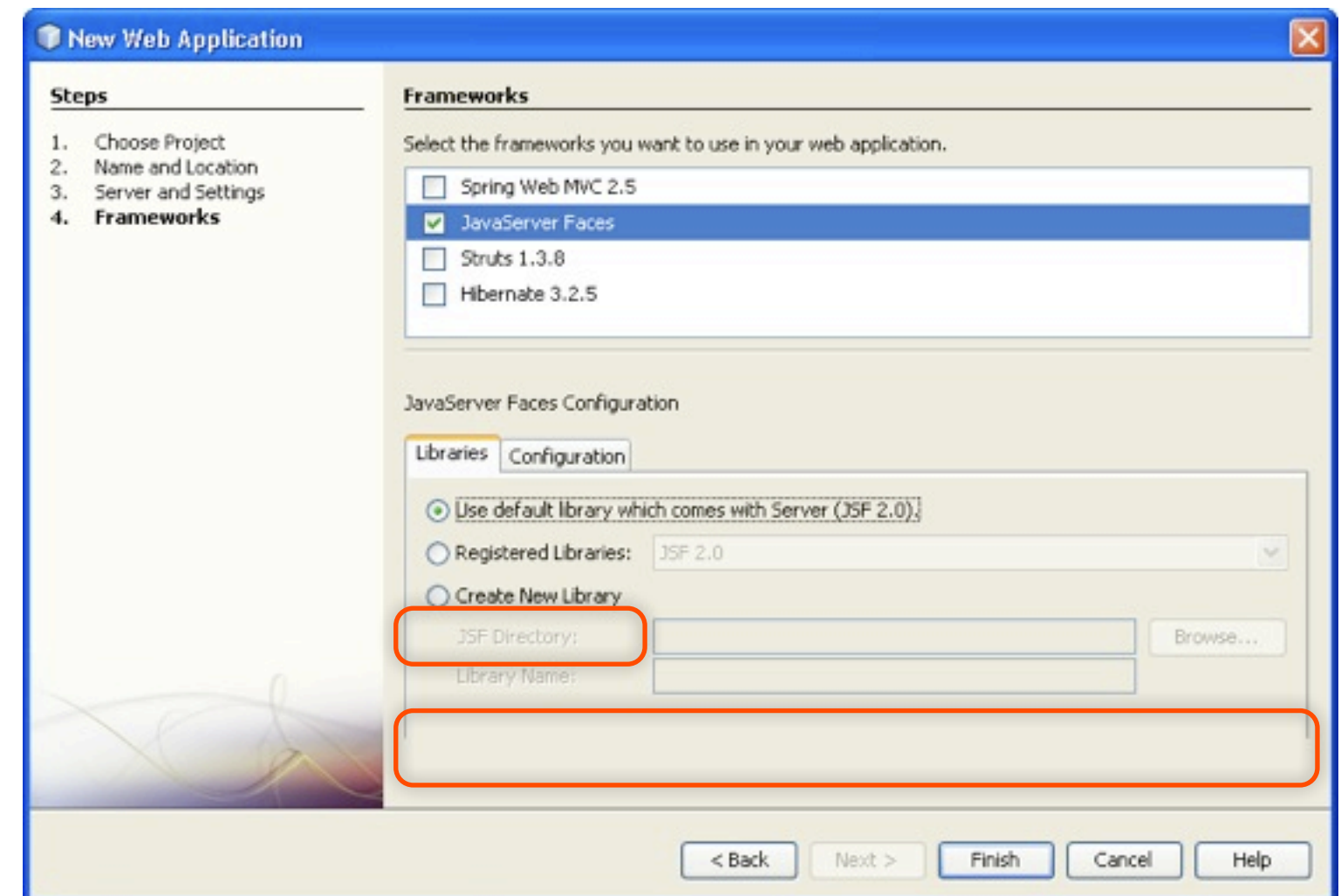
Various issues with the JSF framework panel

Finding

- The bottom part of the tabbed pane was hidden due to not enough room in the wizard.
- The term “Directory” should not be used in GUI.

Recommendation

- There seem to be unnecessary empty space at the bottom of the tabbed pane content. If it cannot be reduced, the whole wizard height needs to increase a bit.
- Instead of “Directory” use “Folder” which is the proper GUI term on Windows, Linux and Mac.



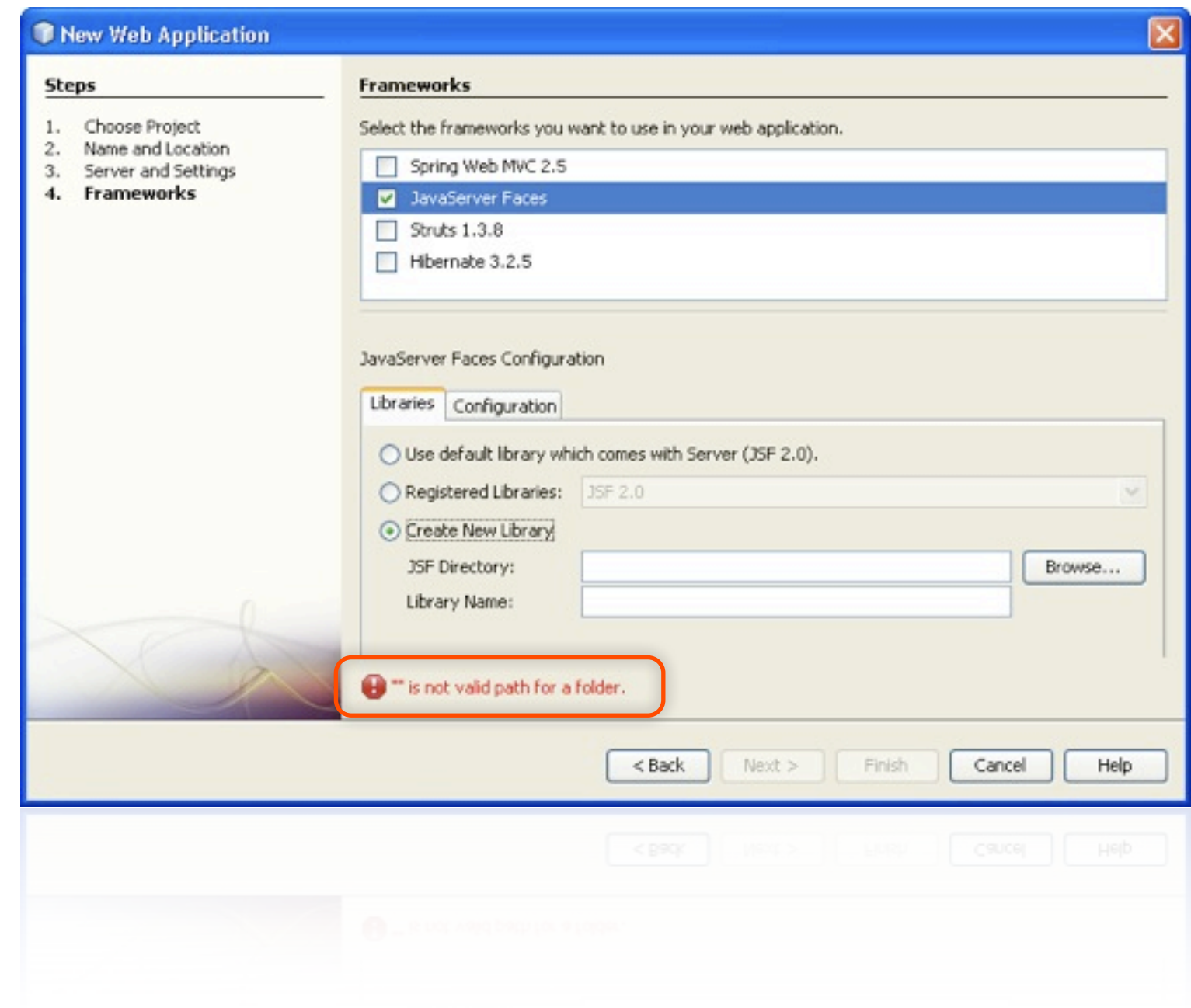
Unsuitable error message

Finding

The user just click the radio button and he got an error message. Showing errors when the user has not made a mistake yes is unnecessary strong communication.

Recommendation

Show information message instead. Check the [information icons](#) page for more details.



Questions?

Jan.Rojcek@Sun.Com